



### 3 bed detached bungalow to buy

Belper Road, Stanley Common, Ilkeston, Derbyshire, DE7 6FY

**£275,000** Starting Bid

🛏 x3 🚿 x2 🚻 x1

Tenure

**Freehold**

Driveway parking

### Property features

- ✓ Being Sold via Secure Sale online bidding. Terms and Conditions
- ✓ THREE BED DETACHED
- ✓ DRIVEWAY
- ✓ REFITTED GF SHOWER ROOM AND FF BATHROOM
- ✓ EPC Rating D

## Key Information

- ✓ Council Tax: Band D
- ✓ EPC Rating: D
- ✓ Heating supply: Gas
- ✓ Electric supply: National Grid
- ✓ Water supply: Direct mains water
- ✓ Broadband: FTTC (fibre to the cabinet)
- ✓ Mobile signal: Good

## Description

Pattinson Auction offer this THREE/FOUR BED DETACHED DORMER BUNGALOW, Refitted GF Shower Room & FF Bathroom, DRIVEWAY, Enclosed Garden & Storage Garage, POPULAR LOCATION, Video Tour!

Council Tax Band: D

Tenure: Freehold

Price: Starting Bid £275,000

Property Type: Detached Bungalow

Parking: Driveway

Construction materials: Brick and block

Roofing type: Slate tiles

Risk of floods and or erosion: No

Flooded in last 5 years: No

Flood defences: No

Planning permissions or proposals for development: No

Coalfield or mining area: No

Listed property: No

Conservation area: No

Public rights of way: No

Adaptions for accessibility: No

Restrictions: No

Required access: No

Heating: Gas

Electric: National Grid

Water: Direct mains water

Water meter: No

Sewerage: Standard UK domestic

Air conditioning: No

Broadband: FTTC (fibre to the cabinet)

Mobile signal coverage: Good

## ENTRANCE / UTILITY

### ENTRANCE / UTILITY

Double glazed door, radiator, wall and base units, worktops, Main Combination boiler.

---

## KITCHEN AREA

### KITCHEN AREA

3.90 m x 2.70 m (12'10" x 8'10")

Panelled radiator, wall and base units, worktops, splash backs, sink, electric hob, double oven, extractor, fridge freezer.

---

## CONSERVATORY

### CONSERVATORY

4.59 m x 2.12 m (15'1" x 6'11")

UPVC double glazed door and windows, radiator.

---

## LOUNGE

### LOUNGE

6.28 m x 3.56 m (20'7" x 11'8")

Two UPVC double glazed windows, two radiators, feature gas fire, stairs.

---

## INNER HALL

## SHOWER ROOM

### SHOWER ROOM

1.76 m x 1.63 m (5'9" x 5'4")

UPVC double glazed window, chrome heated towel rail, corner shower with dual rainfall shower, vanity wash basin, WC, part tiled walls, spotlights.

---

## Bedroom 1

### BEDROOM & DRESSING AREA (Formerly Two Bedrooms)

6.42 m x 3.97 m (21'1" x 13'0")

UPVC double glazed French doors and window, two radiators, wardrobes.

---

## LANDING

### LANDING

Double glazed Velux window, storage cupboard.

---

## Bedroom 2

### BEDROOM

4.00 m x 3.62 m (13'1" x 11'11")

Two double glazed velux windows, radiator, eaves storage.

## **Bedroom 3**

BEDROOM

3.93 m x 3.62 m (12'11" x 11'11")

Two double glazed velux windows, radiator, eaves storage.

---

## **BATHROOM**

BATHROOM

3.14 m x 1.69 m (10'4" x 5'7")

Two UPVC double glazed windows, chrome heated towel rail, 'L' shaped bath with dual rainfall shower, vanity wash basin, WC, tiled splash backs.

---

## **OUTSIDE**

OUTSIDE

Front: Generous tarmac driveway.

Rear: Enclosed garden laid to lawn with timber decked area.

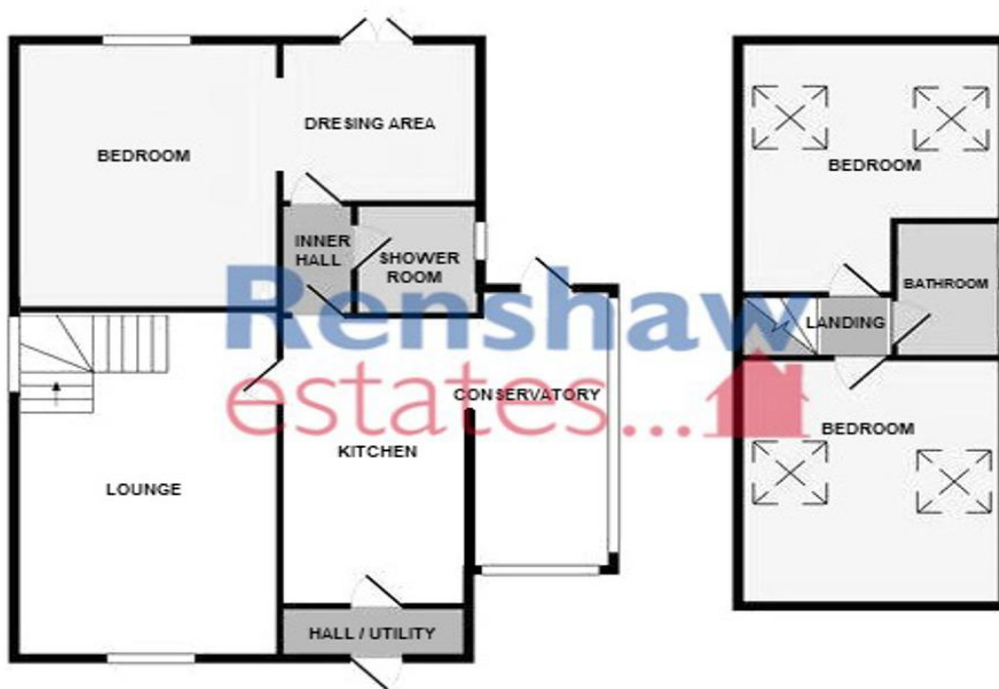
---

## **STORAGE GARAGE**

STORAGE GARAGE

4.71 m x 2.24 m (15'5" x 7'4")

Door, two windows, power and light.



Energy Efficiency Rating		
	Current	Potential
<i>Very energy efficient - lower running costs</i>		
(92-100) <b>A</b>		
(81-91) <b>B</b>		
(69-80) <b>C</b>		78
(55-68) <b>D</b>	53	
(39-54) <b>E</b>		
(21-38) <b>F</b>		
(1-20) <b>G</b>		
<i>Not energy efficient - higher running costs</i>		
<b>England, Scotland &amp; Wales</b>	EU Directive 2002/91/EC	

Belper Road, Stanley Common, Ilkeston, Derbyshire, DE7 6FY

Contact your local branch today for more information on this property:

**HEAD OFFICE 1 PAVILION SQUARE, WESTHOUGHTON, BOLTON, LANCASHIRE, BL5 3AJ,**  
<https://www.simply-residential.co.uk/>

These particulars, whilst believed to be accurate are set out as a general outline only for guidance and do not constitute any part of an offer or contract. Intending purchasers should not rely on them as statements of representation of fact, but must satisfy themselves by inspection or otherwise as to their accuracy. No person in this firm's employment has the authority to make or give any representation or warranty in respect of the property.

