



2 bed terraced house to buy in

May Street, Bishop Auckland, Bishop
Auckland, Durham, DL14 7DB

£69,000

🏠 x2 🚗 x1 🚲 x1

Tenure

Freehold

Property features

- ✓ No Upper Chain
- ✓ Sought after location
- ✓ Mid- Terrace Property
- ✓ Private Yard
- ✓ EPC Rating C

On Street parking

Garden

Key Information

- ✓ Council Tax: Band A
- ✓ EPC Rating: C
- ✓ Heating supply: Gas

Description

****TWO BED FAMILY HOME**RECEPTION ROOM**PRIVATE REAR YARD**POPULAR LOCATION****

Pattinson Estate Agents are delighted to present to the market this spacious two bedroom family home, located in the popular area of Bishop Auckland.

This deceptively spacious property briefly comprises:- reception room, dining room, kitchen, two bedrooms, family bathroom with separate W/C.

To the ground floor the family reception room sits to the front of the property with a large window allowing plenty of natural light to the room. There is a dining room ideal for entertaining and a window looking out to the rear yard. The kitchen is fitted with plenty of base units that have a contrasting worktop and wall units for storage. A modern parquet flooring and tiling on the walls finish this room nicely. There is space for freestanding oven and washing machine. An external door from the kitchen leads to the private yard.

To the first floor are two large bright bedrooms, a bathroom and separate WC.

Externally, the property has a private rear yard, which is complemented with a useful brick storage outhouse.

This charming terraced house has no onward chain and would suit an abundance of buyers looking for a turnkey property in a well connected location .

Situated with close proximity to Bishop Auckland town centre which has many convenience stores, shops and public houses. Local amenities within the area include a golf club, supermarkets, Tindale Retail park which is currently being extended to include more restaurants a bowling alley and shops. Bishop Auckland is well located for access to the A1M to reach locations further afield.

Early viewings come highly recommended to appreciate this property, please call our Durham branch to arrange a viewing.

Council Tax Band: A

Tenure: Freehold

Price: £69,000

Property Type: Terraced House

USPs: Garden

Parking: On Street

Heating: Gas

External



Living Room

3.95m x 4.00m (12'11" x 13'1")

Window to front elevation, radiator.



Dining Room

4.00m x 2.75m (13'1" x 9'0")

Rear window facing yard, radiator



Kitchen

3.70m x 2.35m (12'1" x 7'8")

A range of wall and base units, window to rear yard, sink, space for washing machine



Bedroom one

5.00m x 4.00m (16'4" x 13'1")

Front elevation window, radiator



Bedroom 2

3.00m x 2.80m (9'10" x 9'2")

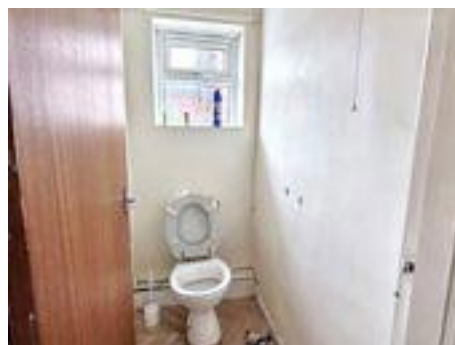
Rear elevation window, radiator



W.C

1.45m x 0.92m (4'9" x 3'0")

Frosted window



Bathroom

2.67m x 2.40m (8'9" x 7'10")

Frosted window, sink, bathtub, radiator



Rearyard





Energy Efficiency Rating		
	Current	Potential
<i>Very energy efficient - lower running costs</i>		
(92-100) A		
(81-91) B		85
(69-80) C	74	
(55-68) D		
(39-54) E		
(21-38) F		
(1-20) G		
<i>Not energy efficient - higher running costs</i>		
England, Scotland & Wales	EU Directive 2002/91/EC	

May Street, Bishop Auckland, Bishop Auckland, Durham, DL14 7DB

Contact your local branch today for more information on this property:

HEAD OFFICE 1 PAVILION SQUARE, WESTHOUGHTON, BOLTON, LANCASHIRE, BL5 3AJ,
<https://www.simply-residential.co.uk/>

These particulars, whilst believed to be accurate are set out as a general outline only for guidance and do not constitute any part of an offer or contract. Intending purchasers should not rely on them as statements of representation of fact, but must satisfy themselves by inspection or otherwise as to their accuracy. No person in this firm's employment has the authority to make or give any representation or warranty in respect of the property.

