



3 bed detached house to buy in

First Street, Gateshead, Tyne and Wear,
NE8 2US

£220,000 Starting Bid

🏠 x3 🪑 x2 🚗 x2

Tenure

Freehold

Driveway & Garage parking

Property features

- ✓ ONLINE AUCTION Fee's Apply
- ✓ Three bedroom
- ✓ Detached house
- ✓ Garden to front and rear
- ✓ EPC Rating C

Key Information

- ✓ Council Tax: Band C
- ✓ EPC Rating: C
- ✓ Heating supply: Gas

Description

TO BE SOLD via ONLINE AUCTION. Fees apply.

This charming, recently refurbished 3-bedroom detached house for sale is located in the heart of Gateshead, a highly sought-after area. It presents a fantastic opportunity for both families and professionals, combining traditional and modern living perfectly.

Upon entering, you are greeted by a spacious hallway that leads to cloakroom W/C and two generously sized reception rooms. These areas are ideal for relaxation and entertainment, featuring large windows that allow an abundance of natural light to fill the space.

The property offers three bedrooms, making it perfect for a growing family.

The kitchen is equipped with modern appliances and ample counter space, making meal preparation easy. A dining area conveniently adjacent to the kitchen allows for effortless serving and an enjoyable dining experience.

This home also benefits from sleek and modern bathrooms, carefully designed for optimal comfort.

Externally, the property features off-street parking and a delightful rear garden, perfect for summer barbecues or simply enjoying a relaxing afternoon outdoors in pleasant weather.

If proximity to local amenities is important in your property search, this house will not disappoint, as it is conveniently located just a short distance from shops, schools, and public transport links.

In summary, this elegant detached house is more than just a home; it's a lifestyle. It is a gem not to be missed, thanks to its fantastic features, unbeatable location, and clear potential to be the dream home you've been waiting for. Don't hesitate—call us at Pattinson Estate Agents to arrange a viewing!

Council Tax Band: C

Tenure: Freehold

Price: Starting Bid £220,000

Property Type: Detached House

Parking: Driveway & Garage

Heating: Gas

Hallway

Cloakroom W/C



Lounge

3.94m x 4.65m (12'11" x 15'3")



Dining room

2.49m x 3.01m (8'2" x 9'10")



Kitchen

4.91m x 3.53m (16'1" x 11'6")



Conservatory

2.45m x 3.11m (8'0" x 10'2")

Landing

Master bedroom

2.82m x 3.60m (9'3" x 11'9")



Bedroom two



Bedroom three

2.09m x 2.25m (6'10" x 7'4")



Bathroom



Garage

2.52m x 5.09m (8'3" x 16'8")



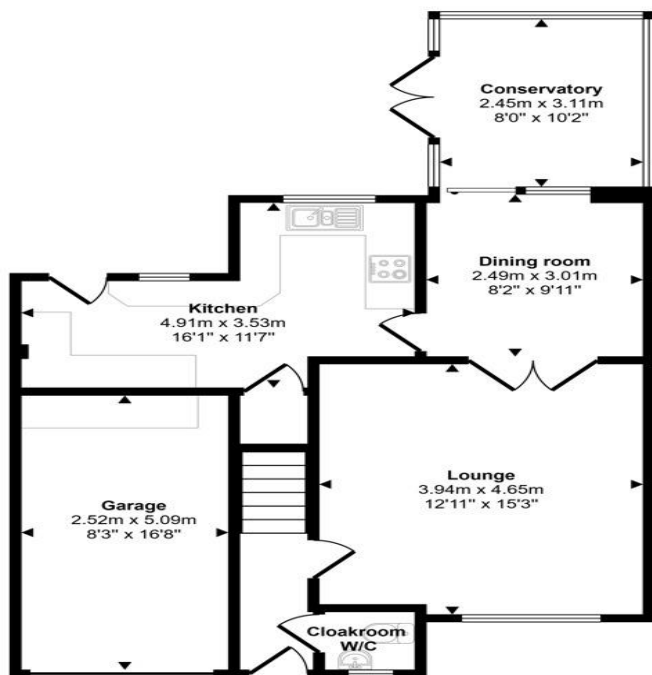
Front garden and driveway



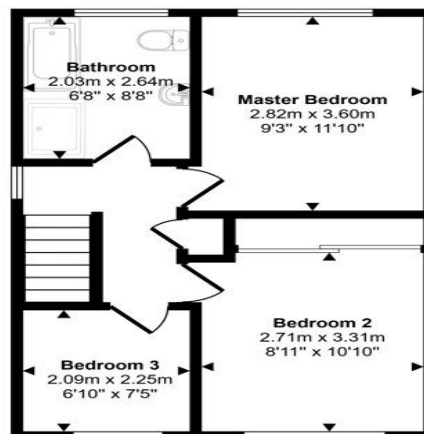
Rear garden



Approx Gross Internal Area
106 sq m / 1144 sq ft



Ground Floor
Approx 68 sq m / 731 sq ft



First Floor
Approx 38 sq m / 413 sq ft

This floorplan is only for illustrative purposes and is not to scale. Measurements of rooms, doors, windows, and any items are approximate and no responsibility is taken for any error, omission or mis-statement. Icons of items such as bathroom suites are representations only and may not look like the real items. Made with Made Snappy 360.

Energy Efficiency Rating		
	Current	Potential
<i>Very energy efficient - lower running costs</i>		
(92-100) A		
(81-91) B		84
(69-80) C	73	
(55-68) D		
(39-54) E		
(21-38) F		
(1-20) G		
<i>Not energy efficient - higher running costs</i>		
England, Scotland & Wales	EU Directive 2002/91/EC	

First Street, Gateshead, Tyne and Wear, NE8 2US

Contact your local branch today for more information on this property:

HEAD OFFICE 1 PAVILION SQUARE, WESTHOUGHTON, BOLTON, LANCASHIRE, BL5 3AJ,
<https://www.simply-residential.co.uk/>

These particulars, whilst believed to be accurate are set out as a general outline only for guidance and do not constitute any part of an offer or contract. Intending purchasers should not rely on them as statements of representation of fact, but must satisfy themselves by inspection or otherwise as to their accuracy. No person in this firm's employment has the authority to make or give any representation or warranty in respect of the property.

