



## 2 bed terraced house to buy in

Baden Powell Street, Deckham,  
Gateshead, Tyne and Wear, NE9 5LD

**£115,000** Offers Over

🏠 x2 🚗 x1 🚲 x1

Tenure

**Freehold**

Driveway parking

## Property features

- ✓ 2 bedrooms
- ✓ Off-road parking
- ✓ Great transport links
- ✓ EPC Rating C

## Key Information

- ✓ Council Tax: Band B
- ✓ EPC Rating: C
- ✓ Heating supply: Gas

## Description

Tucked away just off Old Durham Road, this mid-terrace property presents an excellent opportunity for first-time buyers or those looking to downsize. Ideally positioned for easy access to local amenities and excellent public transport links, the home also benefits from being just a short drive from both Gateshead and Newcastle, making it perfect for commuters.

Features include UPVC double glazing, gas central heating, off-road parking and a private garden. The accommodation briefly comprises an entrance porch, a comfortable lounge, a fitted kitchen, two bedrooms and a modern bathroom.

Externally, the property enjoys gardens and the added convenience of off-road parking, completing this appealing and practical home. Early viewing is highly recommended to appreciate all that this property has to offer.

Council Tax Band: B

Tenure: Freehold

Price: Offers Over £115,000

Property Type: Terraced House

Parking: Driveway

Heating: Gas

## Entrance Lobby

UPVC double glazed door

---

## Lounge

5.00m x 3.90m (16'4" x 12'9")

UPVC double glazed bow window, radiator, open plan staircase



## Kitchen

3.90m x 1.70m (12'9" x 5'6")

Fitted in wall and base units with colour coordinated sink and drainer with mixer tap. ceramic hob and built in electric oven with extractor over, space for automatic washing machine, UPVC double glazed window, breakfast t bar, UPVC double glazed window



## Landing

## Bedroom One

2.80m x 3.90m (9'2" x 12'9")

Two UPVC double glazed windows, radiator, fitted wardrobes



## Bedroom Two

2.80m x 2.80m (9'2" x 9'2")

UPVC double glazed window, radiator, built in cupboard, built in cupboard



## Bathroom

1.70m x 2.00m (5'6" x 6'6")

Panelled bath with mains fed shower over and glazed shower screen, WC, wash basin, cladding to walls, extractor fan, radiator



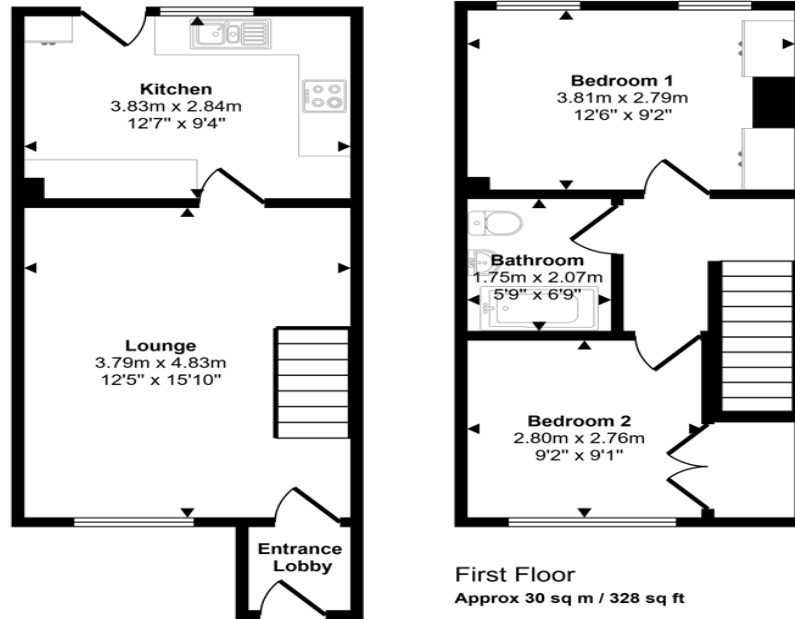
---

## External

Lawned garden to the front and off road parking to the rear



Approx Gross Internal Area  
62 sq m / 667 sq ft



This floorplan is only for illustrative purposes and is not to scale. Measurements of rooms, doors, windows, and any items are approximate and no responsibility is taken for any error, omission or mis-statement. Icons of items such as bathroom suites are representations only and may not look like the real items. Made with Made Snappy 360.

Energy Efficiency Rating		
	Current	Potential
<i>Very energy efficient - lower running costs</i>		
(92-100) <b>A</b>		
(81-91) <b>B</b>		
(69-80) <b>C</b>	75	80
(55-68) <b>D</b>		
(39-54) <b>E</b>		
(21-38) <b>F</b>		
(1-20) <b>G</b>		
<i>Not energy efficient - higher running costs</i>		
<b>England, Scotland &amp; Wales</b>	EU Directive 2002/91/EC	

Baden Powell Street, Deckham, Gateshead, Tyne and Wear, NE9 5LD

Contact your local branch today for more information on this property:

**HEAD OFFICE 1 PAVILION SQUARE, WESTHOUGHTON, BOLTON, LANCASHIRE, BL5 3AJ,**  
<https://www.simply-residential.co.uk/>

These particulars, whilst believed to be accurate are set out as a general outline only for guidance and do not constitute any part of an offer or contract. Intending purchasers should not rely on them as statements of representation of fact, but must satisfy themselves by inspection or otherwise as to their accuracy. No person in this firm's employment has the authority to make or give any representation or warranty in respect of the property.

