



## 2 bed semi-detached house to buy in NE15

Weidner Road, Condercum Park,  
Newcastle upon Tyne, Tyne and Wear,  
NE15 6QQ

**£159,950**

🏠 x2 🚗 x1 🚲 x2

Tenure

**Freehold**

Driveway parking

## Property features

- ✓ Two Bedroom Semi Detached
- ✓ Modern Fitted Kitchen
- ✓ Double Driveway
- ✓ Wood Burning Stove
- ✓ EPC Rating C

## Key Information

- ✓ Council Tax: Band A
- ✓ EPC Rating: C
- ✓ Heating supply: Gas

## Description

A stunning two-bedroom semi-detached home, beautifully presented throughout and offering stylish, modern living in a sought-after residential location.

Situated on Weidner Road, Condercum Park, Newcastle upon Tyne, this exceptional property has been thoughtfully extended to create a spacious open-plan kitchen diner, ideal for both everyday living and entertaining. Finished to a high standard throughout, the home effortlessly combines contemporary design with warm, character features.

The accommodation briefly comprises: a welcoming entrance hallway, a well-proportioned lounge featuring a charming wood-burning stove, flowing through to a dining area and the impressive extended kitchen diner. To the first floor are two generous bedrooms and a stylish, modern bathroom. Externally, the property continues to impress with a private rear garden, perfect for relaxing or outdoor dining, while to the front there is a double driveway providing ample off-street parking.

This superb home is ideally located close to local amenities, schools and transport links, making it an excellent choice for first-time buyers, professionals or those looking to downsize without compromise.

Early viewing is highly recommended to fully appreciate the quality and space on offer.

Council Tax Band: A

Tenure: Freehold

Price: £159,950

Property Type: Semi-detached house

Parking: Driveway

Heating: Gas

## Entrance Hallway

Stairs to First Floor.



## Lounge

5.40m x 3.50m (17'8" x 11'5")



## Dining Area



## Kitchen



## Stairs to First Floor

## Bedroom One

3.90m x 2.60m (12'9" x 8'6")



## Bedroom Two

2.70m x 2.20m (8'10" x 7'2")



---

## Bathroom

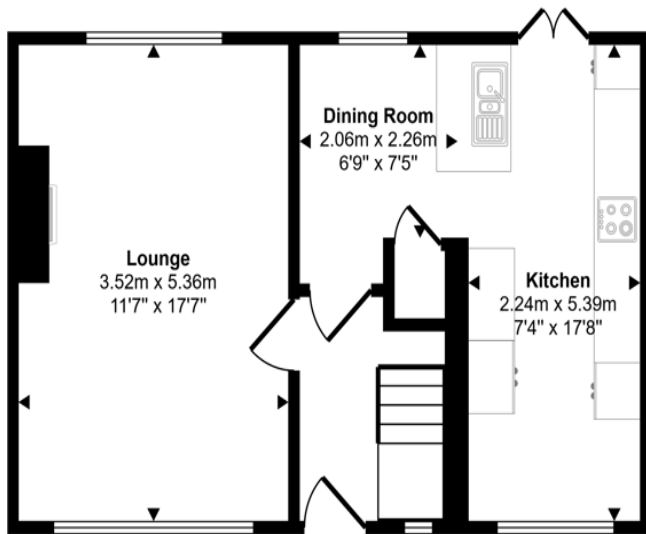


---

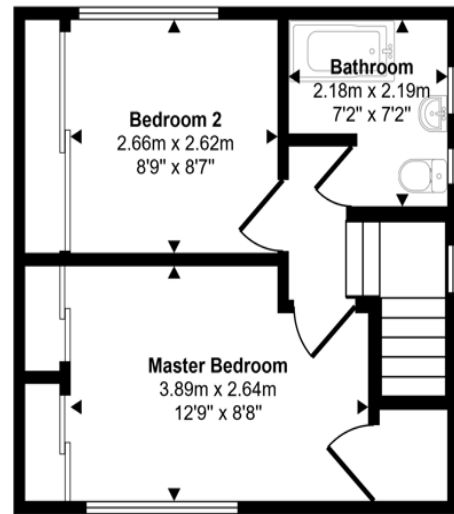
## External



Approx Gross Internal Area  
74 sq m / 796 sq ft



Ground Floor  
Approx 44 sq m / 470 sq ft



First Floor  
Approx 30 sq m / 326 sq ft

This floorplan is only for illustrative purposes and is not to scale. Measurements of rooms, doors, windows, and any items are approximate and no responsibility is taken for any error, omission or mis-statement. Icons of items such as bathroom suites are representations only and may not look like the real items. Made with Made Snappy 360.

Energy Efficiency Rating		
	Current	Potential
<i>Very energy efficient - lower running costs</i>		
(92-100) <b>A</b>		
(81-91) <b>B</b>		88
(69-80) <b>C</b>	74	
(55-68) <b>D</b>		
(39-54) <b>E</b>		
(21-38) <b>F</b>		
(1-20) <b>G</b>		
<i>Not energy efficient - higher running costs</i>		
<b>England, Scotland &amp; Wales</b>	EU Directive 2002/91/EC	

Weidner Road, Condercum Park, Newcastle upon Tyne, Tyne and Wear, NE15 6QQ

Contact your local branch today for more information on this property:

**HEAD OFFICE 1 PAVILION SQUARE, WESTHOUGHTON, BOLTON, LANCASHIRE, BL5 3AJ,**  
<https://www.simply-residential.co.uk/>

These particulars, whilst believed to be accurate are set out as a general outline only for guidance and do not constitute any part of an offer or contract. Intending purchasers should not rely on them as statements of representation of fact, but must satisfy themselves by inspection or otherwise as to their accuracy. No person in this firm's employment has the authority to make or give any representation or warranty in respect of the property.

