



3 bed semi-detached house to buy in L30

Marina Crescent, Netherton, Bootle, Merseyside, L30 1RL

£130,000 Starting Bid

🏠 x3 🚗 x1 🚻 x1

Tenure

Freehold

Driveway parking

Property features

- ✓ Being sold via Secure Sale online bidding. Terms & Conditions
- ✓ 3 Bedroom Semi Detached
- ✓ EPC Rating D
- ✓ No Chain
- ✓ EPC Rating D

Key Information

- ✓ Council Tax: Band B
- ✓ EPC Rating: D
- ✓ Heating supply: Gas
- ✓ Electric supply: National Grid
- ✓ Water supply: Direct mains water
- ✓ Broadband: None

Description

We are delighted to offer this extended three bedroom semi detached house situated in a popular location off Park Lane and convenient for local shops, schools and Aintree Station.

The spacious accommodation briefly comprises; entrance hall, living room and dining kitchen. To the first floor there are three bedrooms and a shower room. Outside there is a very good sized rear garden and walled front with open access to a paved driveway. The property also benefits from uPVC double glazing and gas central heating.

Offered with no ongoing chain this property would make a perfect family home - early viewing recommended.

Council Tax Band: B

Tenure: Freehold

Price: Starting Bid £130,000

Property Type: Semi-detached house

Parking: Driveway

Construction materials: Brick and block

Risk of floods and or erosion: No

Flooded in last 5 years: No

Flood defences: No

Planning permissions or proposals for development: No

Coalfield or mining area: No

Listed property: No

Conservation area: No

Public rights of way: No

Adaptions for accessibility: No

Restrictions: No

Heating: Gas

Electric: National Grid

Water: Direct mains water

Water meter: No

Sewerage: Standard UK domestic

Air conditioning: No

Broadband: None

Entrance Hall

uPVC double glazed front door and window, radiator, stairs to first floor



Living Room

6.02m x 3.24m (19'9" x 10'7")

uPVC double glazed window to front aspect, gas fire in feature surround, radiator, uPVC double glazed patio doors to rear garden



Extended Dining Kitchen

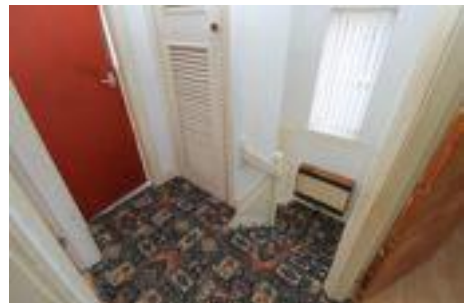
6.04m x 2.31m (19'9" x 7'6")

fitted kitchen with a range of base and wall cabinets with complementary worktops, integrated oven and gas hob with extractor over, plumbing for washing machine, space for fridge freezer, laminate flooring, tiled splashbacks, radiator, under stairs cupboard, uPVC double glazed windows to side and rear aspects



Landing

uPVC double glazed window to side aspect, built in cupboard, access to loft space, wall mounted heater



Bedroom 1

2.99m x 3.22m (9'9" x 10'6")

uPVC double glazed window to front aspect, radiator



Bedroom 2

3.00m x 2.32m (9'10" x 7'7")

uPVC double glazed window to rear aspect, radiator, fitted wardrobes



Bedroom 3

2.61m x 2.35m (8'6" x 7'8")

uPVC double glazed window to rear aspect, radiator



Shower Room

1.38m x 2.38m (4'6" x 7'9")

shower cubicle with electric shower, wash hand basin and low level w.c., radiator, tiled floor and walls, uPVC double glazed frosted window to front aspect



Rear Garden

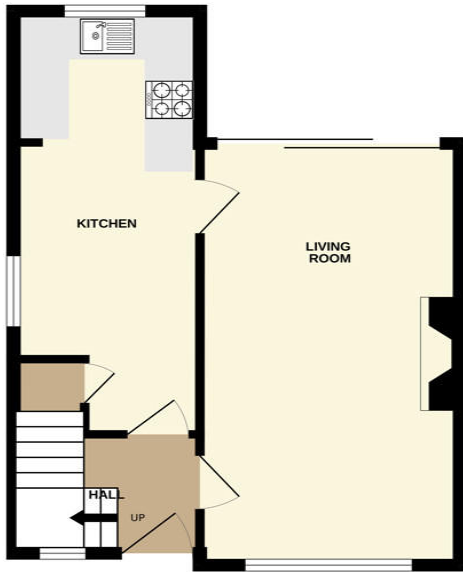
good sized rear garden laid mainly to lawn with borders



Front Garden

walled front with gated access to paved driveway and gravel border, gated access to rear garden

GROUND FLOOR



1ST FLOOR



Whilst every attempt has been made to ensure the accuracy of the floorplan contained here, measurements of doors, windows, rooms and any other items are approximate and no responsibility is taken for any error, omission or mis-statement. This plan is for illustrative purposes only and should be used as such by any prospective purchaser. The services, systems and appliances shown have not been tested and no guarantee as to their operability or efficiency can be given.
Made with Metropix ©2025

Energy Efficiency Rating		Current	Potential
<i>Very energy efficient - lower running costs</i>			
(92-100) A			
(81-91) B			82
(69-80) C			
(55-68) D		66	
(39-54) E			
(21-38) F			
(1-20) G			
<i>Not energy efficient - higher running costs</i>			
England, Scotland & Wales		EU Directive 2002/91/EC	

Marina Crescent, Netherton, Bootle, Merseyside, L30 1RL

Contact your local branch today for more information on this property:

HEAD OFFICE 1 PAVILION SQUARE, WESTHOUGHTON, BOLTON, LANCASHIRE, BL5 3AJ,
<https://www.simply-residential.co.uk/>

These particulars, whilst believed to be accurate are set out as a general outline only for guidance and do not constitute any part of an offer or contract. Intending purchasers should not rely on them as statements of representation of fact, but must satisfy themselves by inspection or otherwise as to their accuracy. No person in this firm's employment has the authority to make or give any representation or warranty in respect of the property.

