



## 2 bed end of terrace house to buy in NE8

Milton Square, Gateshead, Tyne and  
Wear, NE8 3HW

**£50,000** Starting Bid

🏠 x2 🚗 x1 🚲 x1

Tenure

**Freehold**

## Property features

- ✓ ON LINE AUCTION
- ✓ End Terrace House
- ✓ Two Bedrooms, Gas Central
- ✓ UPVC Double Glazing
- ✓ EPC Rating C

On Street parking

## Key Information

- ✓ Council Tax: Band A
- ✓ EPC Rating: C
- ✓ Heating supply: Gas

## Description

\*\*\*\*\*ON LINE AUCTION\*\*\*\*\* A spacious two bedroom end of terrace home presents an excellent opportunity for possible rental, first time buyers or families alike. Requiring modernisation, the property offers fantastic potential, including scope to reconfigure into a three bedroom home, subject to the necessary permissions.

The property has already benefited from a number of improvements, including UPVC double glazing, combi boiler central heating and the installation of external wall insulation completed in 2013.

Ideally positioned for convenient access to local amenities, the property is well placed for commuting to Gateshead, Low Fell and Newcastle.

The accommodation briefly comprises an entrance lobby, lounge, inner lobby, kitchen diner, rear lobby, two bedrooms and a bathroom.

Externally, the property benefits from gardens to both the front and rear.

Council Tax Band: A

Tenure: Freehold

Price: Starting Bid £50,000

Property Type: End of terrace house

Parking: On Street

Heating: Gas

## Entrance Lobby

Composite door

---

## Lounge

4.50m x 3.10m (14'9" x 10'2")

UPVC double glazed window, radiator



## Mid Lobby

Two built in cupboards, radiator, stairs to the first floor



## Kitchen/Diner

4.50m x 3.10m (14'9" x 10'2")

Fitted wall and base units, space for a gas cooker, stainless steel sink and drainer, two UPVC double glazed windows, radiator



## Rear Lobby

Composite door, combi boiler

---

## Landing



## Bedroom One

4.50m x 3.10m (14'9" x 10'2")

Built in cupboards, two radiators, two UPVC double glazed windows



## Bedroom Two

4.50m x 3.10m (14'9" x 10'2")

Two UPVC double glazed windows, two radiators



## Bathroom

1.90m x 1.80m (6'2" x 5'10")

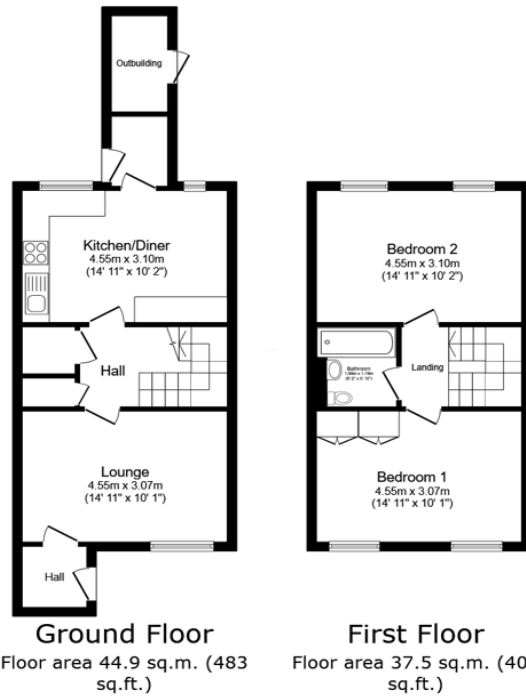
WC, wash basin, panelled bath with electric shower over, radiator, tiled walls



## External

Open plan garden to the front and a hard standing garden to the rear and storage shed





Total floor area: 82.4 sq.m. (887 sq.ft.)

This floor plan is for illustrative purposes only. It is not drawn to scale. Any measurements, floor areas (including any total floor area), openings and orientations are approximate. No details are guaranteed, they cannot be relied upon for any purpose and do not form any part of any agreement. No liability is taken for any error, omission or misstatement. A party must rely upon its own inspection(s). Powered by www.Propertybox.io

Energy Efficiency Rating		
	Current	Potential
<i>Very energy efficient - lower running costs</i>		
(92-100) <b>A</b>		
(81-91) <b>B</b>		82
(69-80) <b>C</b>	74	
(55-68) <b>D</b>		
(39-54) <b>E</b>		
(21-38) <b>F</b>		
(1-20) <b>G</b>		
<i>Not energy efficient - higher running costs</i>		
<b>England, Scotland &amp; Wales</b>		EU Directive 2002/91/EC

Milton Square, Gateshead, Tyne and Wear, NE8 3HW

Contact your local branch today for more information on this property:

**HEAD OFFICE 1 PAVILION SQUARE, WESTHOUGHTON, BOLTON, LANCASHIRE, BL5 3AJ,**  
<https://www.simply-residential.co.uk/>

These particulars, whilst believed to be accurate are set out as a general outline only for guidance and do not constitute any part of an offer or contract. Intending purchasers should not rely on them as statements of representation of fact, but must satisfy themselves by inspection or otherwise as to their accuracy. No person in this firm's employment has the authority to make or give any representation or warranty in respect of the property.

