



3 bed terraced house to buy in

Runfold Close, Roseworth ,
Stockton-on-Tees, Durham, TS19 9LR

£110,000

🏠 x3 🚗 x1 🚲 x1

Tenure

Freehold

Driveway parking

Property features

- ✓ No Forward Chain
- ✓ Popular Roseworth Location
- ✓ Front and Rear Gardens
- ✓ Within Reach to Local Schools, Shops, Amenities and Transport
- ✓ EPC Rating C

Key Information

- ✓ Council Tax: Band A
- ✓ EPC Rating: C
- ✓ Heating supply: Gas

Description

*****No Forward Chain*****

Offered to the market with no forward chain, this well-presented three bedroom terraced home on the popular Runfold Close in Roseworth provides an excellent opportunity for first-time buyers, families, or investors seeking a spacious and conveniently located property.

The property welcomes you with a bright and comfortable lounge, providing the perfect space to relax or entertain guests. To the rear, a generous kitchen/diner offers ample storage and workspace, with plenty of room for family dining and access to the rear garden, creating a practical and sociable heart of the home. Upstairs, the property benefits from three well-proportioned bedrooms, ideal for growing families, home working, or guest accommodation. A family bathroom serves the first floor and is fitted with a modern suite.

Externally, the home enjoys gardens to both the front and rear. The rear garden provides a pleasant outdoor space for relaxing, entertaining, or children's play, while the front garden adds to the property's kerb appeal.

Runfold Close is ideally situated within Roseworth, offering access to local shops, schools, amenities, and transport links, making commuting and daily life convenient.

Council Tax Band: A

Tenure: Freehold

Price: £110,000

Property Type: Terraced House

Parking: Driveway

Heating: Gas

Entrance



Hallway

Lounge

4.06m x 3.97m (13'3" x 13'0")



Kitchen/Diner

5.84m x 2.83m (19'1" x 9'3")



Dining Area



1st Floor Landing

Bedroom 1

3.47m x 3.43m (11'4" x 11'3")



Bedroom 2

4.78m x 2.85m (15'8" x 9'4")



Bedroom 3

3.37m x 2.46m (11'0" x 8'0")

Family Bathroom

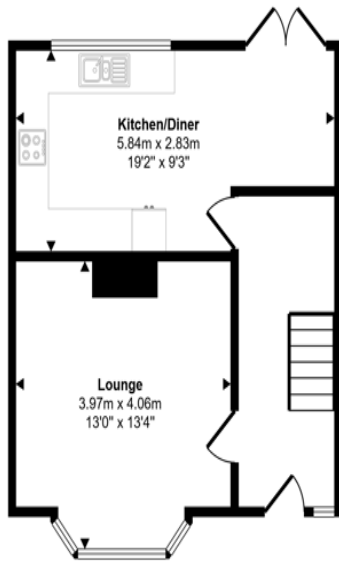
2.41m x 1.63m (7'10" x 5'4")



External

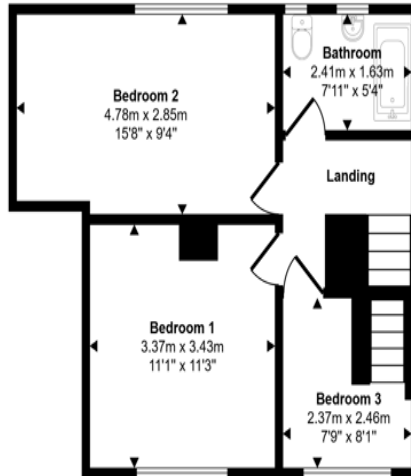


Approx Gross Internal Area
105 sq m / 1126 sq ft

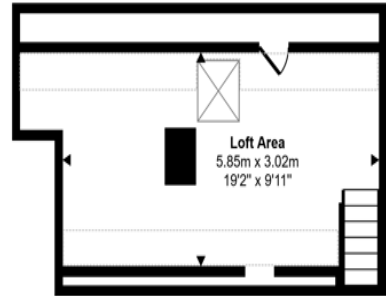


Ground Floor
Approx 39 sq m / 419 sq ft

Denotes head height below 1.5m



First Floor
Approx 42 sq m / 451 sq ft



Second Floor
Approx 24 sq m / 256 sq ft

This floorplan is only for illustrative purposes and is not to scale. Measurements of rooms, doors, windows, and any items are approximate and no responsibility is taken for any error, omission or mis-statement. Icons of items such as bathroom suites are representations only and may not look like the real items. Made with Made Snappy 360.

Energy Efficiency Rating		
	Current	Potential
<i>Very energy efficient - lower running costs</i>		
(92-100) A		
(81-91) B		
(69-80) C	72	78
(55-68) D		
(39-54) E		
(21-38) F		
(1-20) G		
<i>Not energy efficient - higher running costs</i>		
England, Scotland & Wales	EU Directive 2002/91/EC	

Runfold Close, Roseworth, Stockton-on-Tees, Durham, TS19 9LR

Contact your local branch today for more information on this property:

HEAD OFFICE 1 PAVILION SQUARE, WESTHOUGHTON, BOLTON, LANCASHIRE, BL5 3AJ,
<https://www.simply-residential.co.uk/>

These particulars, whilst believed to be accurate are set out as a general outline only for guidance and do not constitute any part of an offer or contract. Intending purchasers should not rely on them as statements of representation of fact, but must satisfy themselves by inspection or otherwise as to their accuracy. No person in this firm's employment has the authority to make or give any representation or warranty in respect of the property.

