



pattinson P

### 3 bed detached bungalow to buy in NE61

Cresswell Road, Cresswell, Morpeth,  
Northumberland, NE61 5HX

**£320,000**

🏠 x3 🚗 x1 🚗 x1

Tenure  
**Freehold**

Driveway & Garage parking

### Property features

- ✓ Coastal Location
- ✓ Detached Bungalow
- ✓ Three Bedrooms
- ✓ Log Burner
- ✓ EPC Rating D

## Key Information

- ✓ Council Tax: Band D
- ✓ EPC Rating: D
- ✓ Heating supply: Air Source Heat Pump
- ✓ Electric supply: National Grid
- ✓ Water supply: Direct mains water
- ✓ Mobile signal: Good

## Description

\*\*\*COASTAL LOCATION - DETACHED BUNGALOW - THREE BEDROOMS - LOUNGE WITH LOG BURNER - CONSERVATORY - GARAGE - DRIVEWAY - STUNNING SOUTH FACING REAR GARDEN - GENEROUS PLOT - NO UPPER CHAIN - VIEW NOW\*\*\*

Pattinson Estate Agents proudly present this three bedroom detached bungaklow situated on Cresswell Road in the coastal village of Cresswell, Morpeth. A beautiful costal location within walking distance of Cresswell beach and Druridge Bay, Cresswell ice cream parlour and the popular Drift Inn Cafe. Neighbouring towns of Morpeth and Ashington are within easy rteach and offer a good range of shops and supermarkets as well as travel links into Newcastle city centre.

The property has been much loved and well maintained over a number of years and is now ready for it's new owner. Warmed via air sourced electric heating there is also a mains gas access point at the front should a buyer wish to convert to gas central heating. There is also Upvc double glazing throughout and solar panels.

Briefly comprising; entrance hallway, lounge, kitchen, conservatory, three bedrooms, bathroom and separate w.c. Externally to the front a private lawned garden with two car driveway leading to the single garage. To the rear a stunning enclosed south facing garden with lawn, patio, mature borders and sheds.

Open countryside views to the front stretching up to the coast.

Sold with no upper chain, early viewings are essential. Please contact our Ashington Team to arrange your appointment.

Council Tax Band: D

Tenure: Freehold

Price: Offers In The Region Of £320,000

Property Type: Detached Bungalow

Parking: Driveway & Garage

Construction materials: Brick and block

Roofing type: Slate tiles

Heating: Air Source Heat Pump, Wood Burner, Solar

Electric: National Grid

Water: Direct mains water

Sewerage: Standard UK domestic

Mobile signal coverage: Good

## Entrance Hallway

Via main access door to the front. Loft access hatch to the ceiling, radiator.



## Entrance Hallway Additional



## Lounge

6.60m x 4.27m (21'7" x 14'0")

Windows to the front and side with open views, feature fireplace and hearth with log burner, radiator.



## Lounge Additional



## Kitchen

3.97m x 3.39m (13'0" x 11'1")

Windows to the side and into the conservatory at the rear. Fitted wood effect wall, floor and drawer units with laminate worktops and tiled splashbacks, stainless steel sink and drainer with mixer tap, plumbing for washing machine, tiled flooring, radiator. Secure access door to the conservatory.



## Kitchen Additional



## Conservatory

3.10m x 2.90m (10'2" x 9'6")

Upvc construction with dwarf wall and vaulted roof. Access door into the rear garden, tiled flooring.



## Conservatory Additional



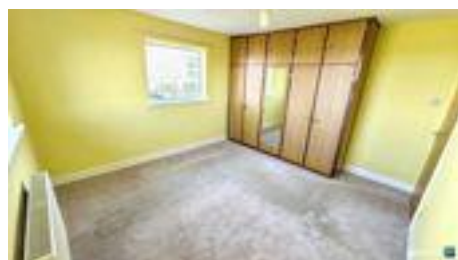
## Master Bedroom

3.66m x 3.99m (12'0" x 13'1")

Windows to the front and side, fitted wardrobes with overhead storage, radiator.



## Master Bedroom Additional



## Bedroom Two

4.02m x 2.98m (13'2" x 9'9")

Window to the rear overlooking the garden, radiator.



## Bedroom Three

3.70m x 2.86m (12'1" x 9'4")

Window to the side, radiator.



## Bathroom

2.51m x 2.51m (8'2" x 8'2")

Frosted window to the rear. Panelled bath with shower over, wash hand basin with vanity worktop and storage beneath, fully tiled, radiator.



## W.C

Frosted window to the rear, w.c, fully tiled.



## Rear Garden



## Rear Garden Additional



## Rear Elevation



## Garage

5.24m x 2.30m (17'2" x 7'6")

Electric roller door to the front, window to the rear and access door into the rear garden.



## Front Elevation



---

## Front Views

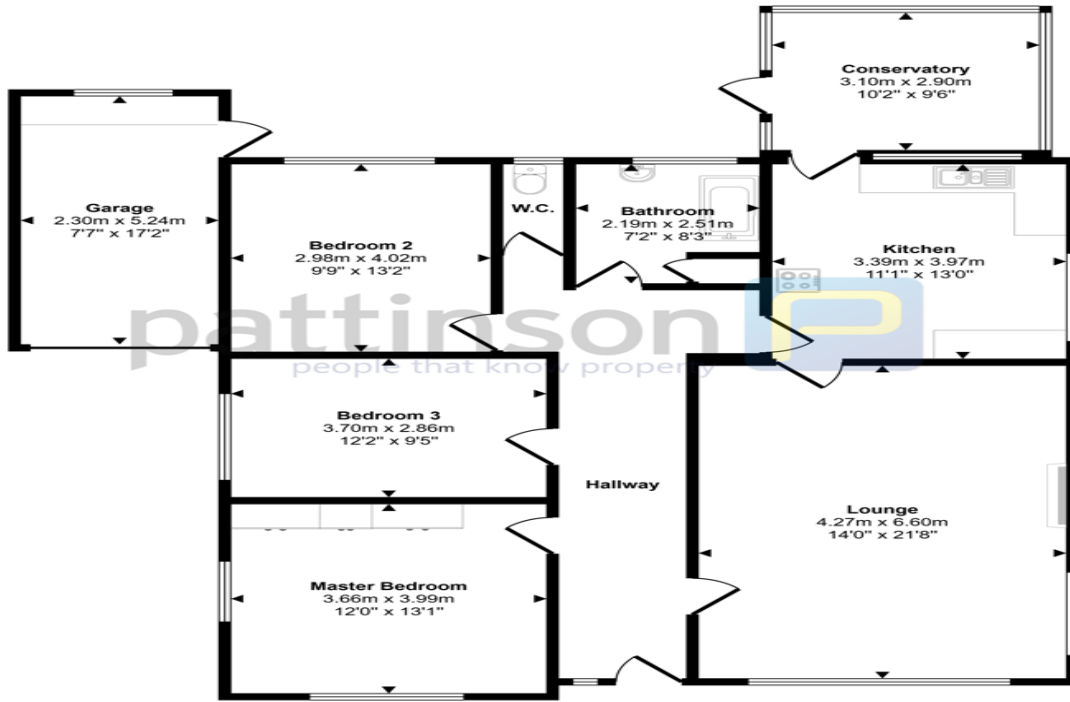


---

## Cresswell Beach



Approx Gross Internal Area  
128 sq m / 1382 sq ft



Floorplan

This floorplan is only for illustrative purposes and is not to scale. Measurements of rooms, doors, windows, and any items are approximate and no responsibility is taken for any error, omission or mis-statement. Icons of items such as bathroom suites are representations only and may not look like the real items. Made with Made Snappy 360.

| Energy Efficiency Rating                           |                            |           |
|--|----------------------------|-----------|
|  | Current                    | Potential |
| <i>Very energy efficient - lower running costs</i> |                            |           |
| (92-100) <b>A</b>                                  |                            |           |
| (81-91) <b>B</b>                                   |                            |           |
| (69-80) <b>C</b>                                   |                            |           |
| (55-68) <b>D</b>                                   | 65                         | 70        |
| (39-54) <b>E</b>                                   |                            |           |
| (21-38) <b>F</b>                                   |                            |           |
| (1-20) <b>G</b>                                    |                            |           |
| <i>Not energy efficient - higher running costs</i> |                            |           |
| <b>England, Scotland &amp; Wales</b>               | EU Directive<br>2002/91/EC |           |

Cresswell Road, Cresswell, Morpeth, Northumberland, NE61 5HX

Contact your local branch today for more information on this property:

**HEAD OFFICE 1 PAVILION SQUARE, WESTHOUGHTON, BOLTON, LANCASHIRE, BL5 3AJ,**  
<https://www.simply-residential.co.uk/>

These particulars, whilst believed to be accurate are set out as a general outline only for guidance and do not constitute any part of an offer or contract. Intending purchasers should not rely on them as statements of representation of fact, but must satisfy themselves by inspection or otherwise as to their accuracy. No person in this firm's employment has the authority to make or give any representation or warranty in respect of the property.

